

Art. KXBRSSHRJ Hi-Vis Softshell Rain Jacket (Printable) - Copenhagen



Size chart

| Size | S | M | L | XL | XXL | 3XL |
|--------|-------|-------|-------|-------|-------|-------|
| Width | 51 cm | 57 cm | 61 cm | 66 cm | 71 cm | 76 cm |
| Height | 71 cm | 72 cm | 74 cm | 76 cm | 78 cm | 80 cm |

Hi-Vis Softshell Rain Jacket (Printable) - Copenhagen

- Certified according to EN ISO 20471:2013/A1:2016
- Orange corresponds to RIS-3279-TOM Iss 2
- Windproof and water repellent with heat insulating fleece lining, EN 343:2019 3:1 Water resistant, Watercolumn 8000 mm
- Two 5 cm wide Broken reflective stripes around the body, over the shoulder and over the sleeves
- Two side pockets, hidden chest pocket with zipper and one inside pocket.
- Fixed hood can be rolled up in the collar
- Printing access at the back and chest

Suitable for

Industry, logistics, airports and harbours, construction sites
Waterproof and windproof, the all-rounder with a unique design.



KKXBRSSHRJYWBK
Yellow / Black
S - 3XL (Front)

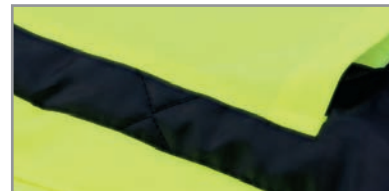
KKXBRSSHRJYWBK
Yellow / Black
S - 3XL (Back)

KXBRSSHRJORBK
Orange / Black
S - 3XL (Front)

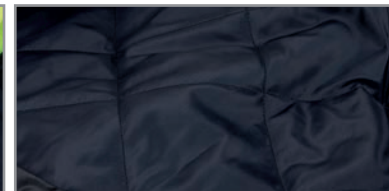
KXBRSSHRJORBK
Orange / Black
S - 3XL (Back)

KXBRSSHRJREBK
Red / Black
S - 3XL (Front)

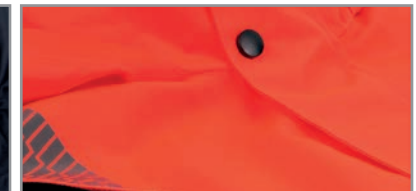
KXBRSSHRJREBK
Red / Black
S - 3XL (Back)



KKXBRSSHRJYWBK
Yellow / Black
Detail



KXBRSSHRJ
Inside
Detail



KXBRSSHRJREBK
Red / Black
Detail



Material: 100 % polyester
Grammage: 200 gsm